



GRAN

SONATA EROICA

per Chitarra

Composta da

MAURO COULOANO

dall'Editore dedicata all'Egregio Sig.

FILIPPO SONARDA

DILETTANTE

Op. 150.

42028

Fr. 5. . .

R. STABILIMENTO TITO DIGIO, RICORDI E FRANCESCO LUCCA

G. RICORDI & C.

Editori-Stampatori

MILANO

NAPOLI — ROMA — PALERMO

Deposto a norma dei trattati internazionali...Proprietà degli Editori.
Tutti i diritti d' esecuzione, riproduzione e trascrizione sono riservati.

(Printed in Italy.)

GRAN SONATA EROICA

ALL. MARCATO.



First musical staff, treble clef, key signature of two sharps (F# and C#). The staff contains a sequence of notes and chords, including a 7th fret barre and a 5th fret barre. The notes are primarily eighth and sixteenth notes, with some chords indicated by vertical lines.

Second musical staff, treble clef, key signature of two sharps. The staff features a complex rhythmic pattern with many sixteenth notes and chords, including a 7th fret barre.

Third musical staff, treble clef, key signature of two sharps. The staff contains a sequence of notes and chords, including a 7th fret barre and a 5th fret barre.

Fourth musical staff, treble clef, key signature of two sharps. The staff features a sequence of notes and chords, including a 7th fret barre.

Fifth musical staff, treble clef, key signature of two sharps. The staff contains a sequence of notes and chords, including a 7th fret barre.

Sixth musical staff, treble clef, key signature of two sharps. The staff features a sequence of notes and chords, including a 7th fret barre.

Seventh musical staff, treble clef, key signature of two sharps. The staff contains a sequence of notes and chords, including a 7th fret barre.

The first staff of music features a treble clef and a key signature of two sharps (F# and C#). The melody is composed of quarter and eighth notes, with some chords marked with an asterisk (*). The bass line consists of a steady eighth-note accompaniment.

The second staff continues the musical piece with a treble clef and two sharps. It features a more active melody with eighth-note runs and some slurs. The bass line remains consistent with the first staff.

The third staff shows a continuation of the melody and accompaniment. The treble clef and two-sharp key signature are maintained. The notation includes various rhythmic values and some chordal textures.

The fourth staff of music continues the piece. The treble clef and two-sharp key signature are present. The melody and bass line show further development of the musical ideas.

The fifth staff continues the musical notation. The treble clef and two-sharp key signature are consistent. The piece features a mix of melodic and harmonic elements.

The sixth and final staff on the page concludes the musical piece. It features a treble clef and two sharps, with a melody and bass line that wrap up the composition.

First musical staff, featuring a treble clef, a key signature of two sharps (F# and C#), and a 2/4 time signature. The melody consists of eighth and sixteenth notes, with some beamed sixteenth notes. The bass line provides a steady accompaniment with quarter notes and rests.

Second musical staff, continuing the melody from the first staff. It features similar rhythmic patterns and includes some dynamic markings such as accents and slurs.

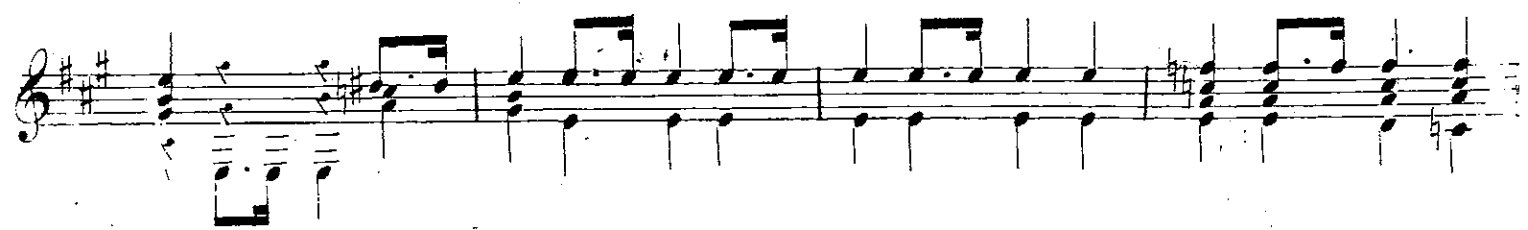
Third musical staff, showing a continuation of the musical piece with consistent rhythmic and melodic elements.

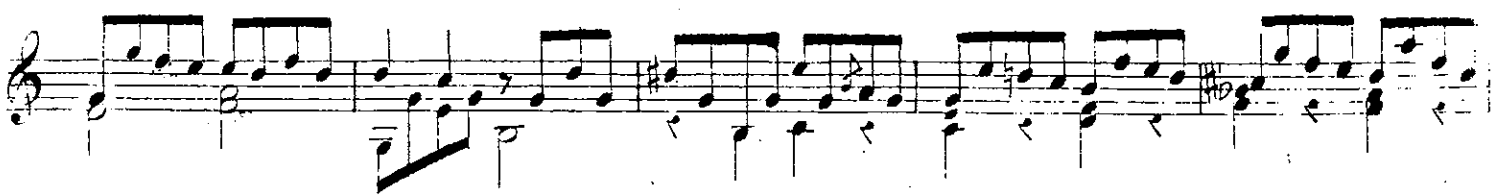
Fourth musical staff, featuring a more active bass line with eighth notes and some syncopation.

Fifth musical staff, containing a melodic phrase that includes a trill-like figure and some grace notes.

Sixth musical staff, concluding the piece with a final melodic flourish and a sustained bass note.

This page of musical notation consists of nine staves of music. The key signature is two sharps (F# and C#). The notation includes various rhythmic patterns, including eighth and sixteenth notes, and rests. There are also some triplets and dynamic markings like accents and slurs. The page number '427-25' is visible at the bottom center.





First musical staff, treble clef, featuring a melodic line with eighth and sixteenth notes and a bass line with chords.

Second musical staff, treble clef, featuring a melodic line with triplets and a bass line with chords.

Third musical staff, treble clef, featuring a melodic line with triplets and a bass line with chords.

Fourth musical staff, treble clef, featuring a melodic line with eighth notes and a bass line with chords.

Fifth musical staff, treble clef, featuring a complex melodic line with many beamed notes and a bass line with chords.

Sixth musical staff, treble clef, featuring a melodic line with eighth notes and a bass line with chords.

Seventh musical staff, treble clef, featuring a melodic line with eighth notes and a bass line with chords.

This image shows a page of musical notation, likely a score for a piece of music. The notation is arranged in seven systems, each consisting of a single staff. The key signature is two sharps (F# and C#), and the time signature is 4/4. The music features a variety of rhythmic patterns, including eighth and sixteenth notes, and rests. The notation is written in a standard musical style with a treble clef and a key signature of two sharps. The page is numbered 12028 at the bottom center.



